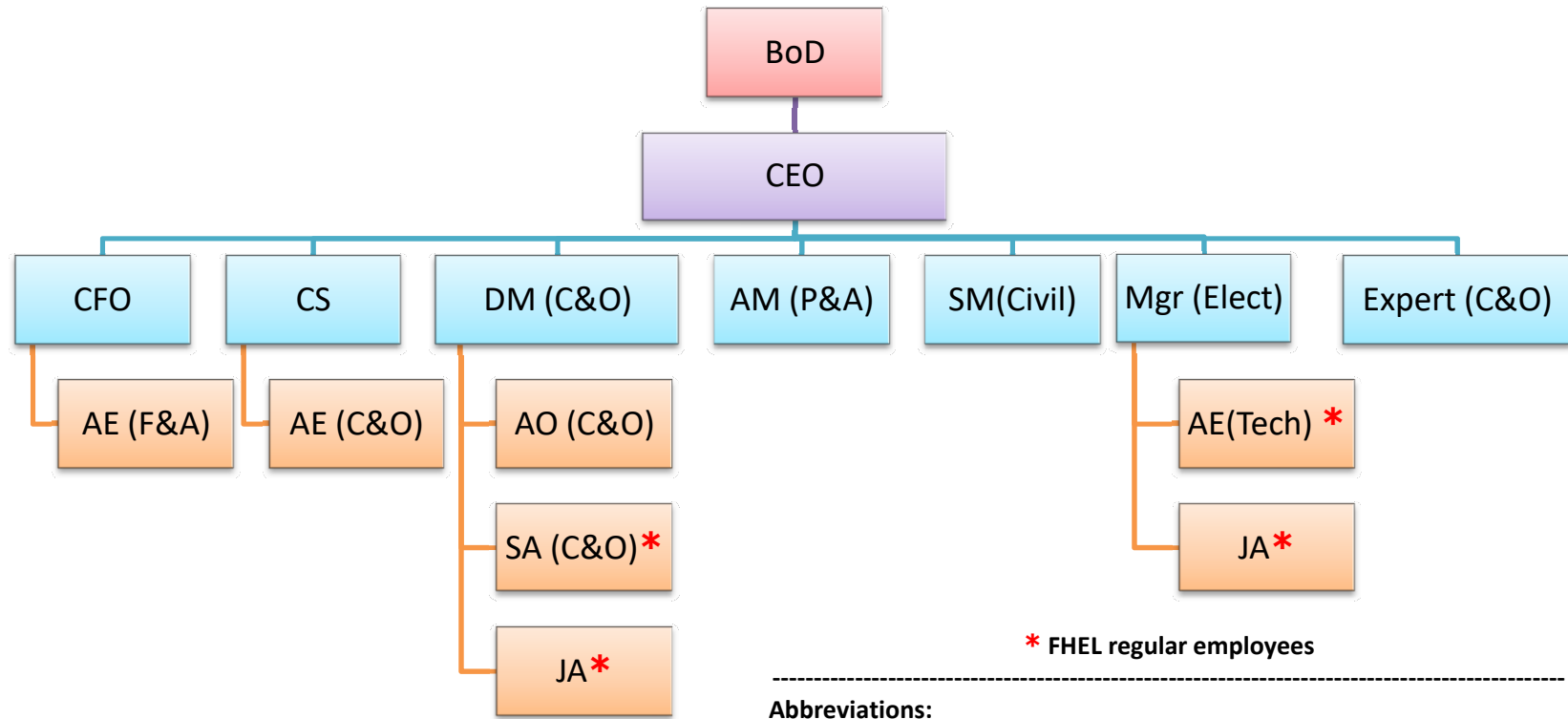


Fresh & Healthy Enterprises Limited

(Agri-Logistics Centre, Rai/Sonepat, Haryana)

Organization Chart



Abbreviations:

F&A : Finance & Accounts
P&A : Personnel & Administration
C&O : Commercial & Operations
SA : Sr. Assistant
AM : Asstt Manager
JA : Jr. Asst.
CFO : Chief Financial Officer
CEO : Chief Executive Officer

AO : Asstt. Officer
Mgr : Manager
Tech : Technical
AE : Asstt. Executive
DM : Dy. Manager
CS : Company Secretary
BoD : Board of Directors